



MTPredictor™

Software & training for Risk/Reward trading with Elliott wave

MTPredictor Daily report

Web: www.mtpredictor.com

Email: Sales@MTPredictor.com

from UK (freephone): 0800 107 5271

from US (toll free): (800) 856-1582

23 Dec 2005

Contents:

- ❑ Announcements
- ❑ Market Commentary
- ❑ Training & Education
- ❑ Paid advertising/sponsorship – BMW, p1; SAS® software, p.2

Announcements

MTPREDICTOR™ with BUSINESS PARTNERS

-  New site feature [here](#)
-  New article [here](#)
-  New reseller – shortly...
-  Latest articles [here](#)
-   Announcements shortly...

SOFTWARE ADD-ONS



- Videos [here](#)

PAID ADVERTISING/SPONSORSHIP

- This report contains an advertisement for SAS® software, p.2 and for BMW



Market commentary

S&P (SP-067) Daily Chart:



As you can see from the chart above, yesterday the S&P basically just moved sideways making an inside day. There is very little I can add to yesterday's comments other than today will be early closing so you can all leave work early and enjoy the long Christmas weekend.

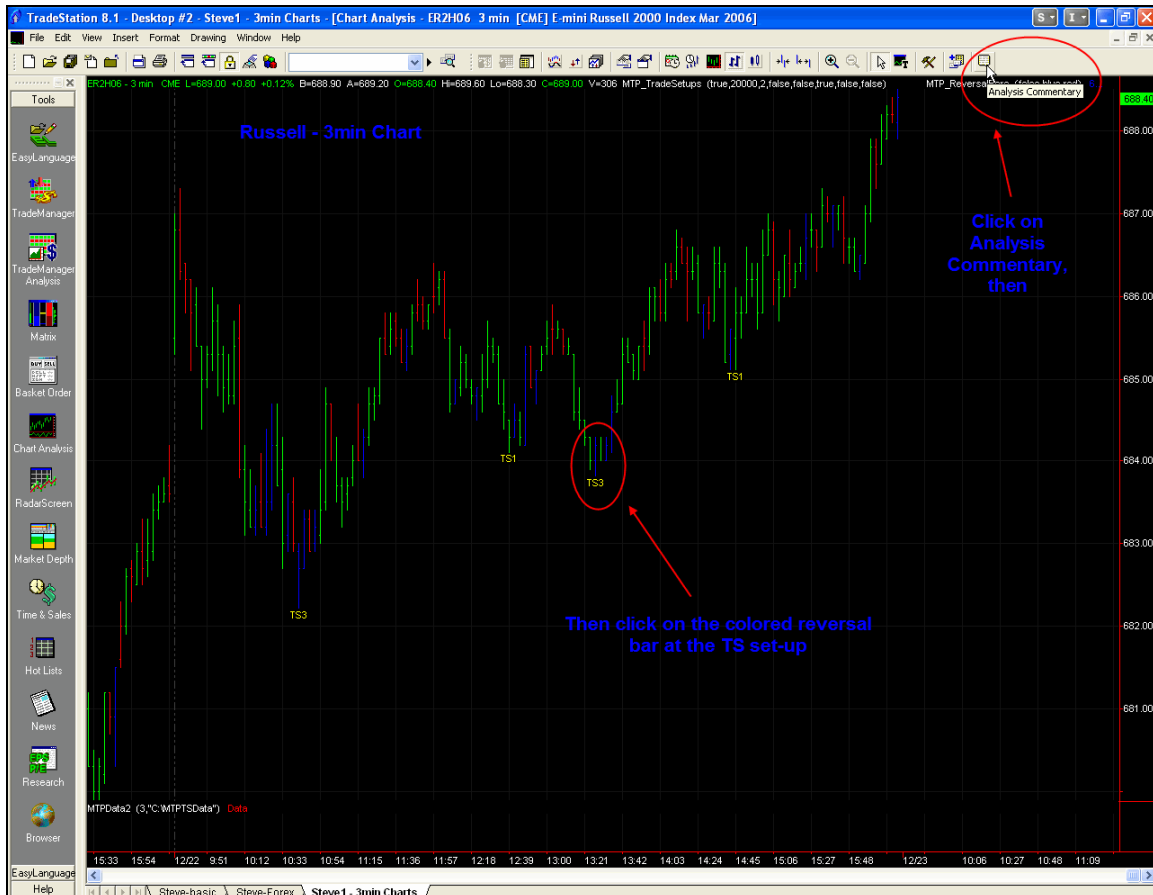
There will be no report next week, as I am having a week off for Christmas, so today (Friday) will be the last report before Jan 2006. So may I wish you all have a very merry Christmas and a happy new year and that you can spend time with friends and family over the Christmas break.

4.5 million people in 40,000 locations have THE POWER TO KNOW.

Find out what SAS® software can do for you.

There will be no specific Real-Time commentary today, but I would like to announce that we have completed the new TradeStation 8 eld's, so today I would like to run through how to use these. Could all TS8 users please email me (steve@MTPredictor.com) for download instructions later today.

After loading the new eld's and applying them to your charts you will see that the normal TS1, TS2 and TS3 set-ups will be displayed as normal. But....



Now you can click on the Analysis Commentary button , then you have to click on a TS set-up, for example the one I have highlighted on the chart above.

But first, let's set-up your account details and Risk parameters.

Continued on the next page . . .

Chart:

The screenshot displays the TradeStation 8.1 interface. The main window shows a candlestick chart for the E-mini Russell 2000 Index. Two dialog boxes are open:

- Format Analysis Techniques & Strategies:** This dialog box has a table with the following data:

Name	Input Values	Type	Status	Alert	Format...	Status	Remove
MTP_ReversaBars	false,blue,red	PaintBar	On	No			
MTP_TradeSetups	true,20000,2,false,false,true,false,2...	ShowMe	On	No			
MTPData2	3;"MTPData"	Indicator	On	No			

 The 'Format...' button for 'MTP_TradeSetups' is circled in red.
- Format ShowMe: MTP_TradeSetups:** This dialog box has a table with the following data:

Name	Value
ShowMPT	true
Capital	20000
PercentRisk	2
RunIntraBar	false
ShowMajorSetups	false
ShowLabels	true
ShowLines	false
ShowDots	false
DotSpacing	2
Inter_TextSpacing	0
Major_TextSpacing	0
Color Buy	blue

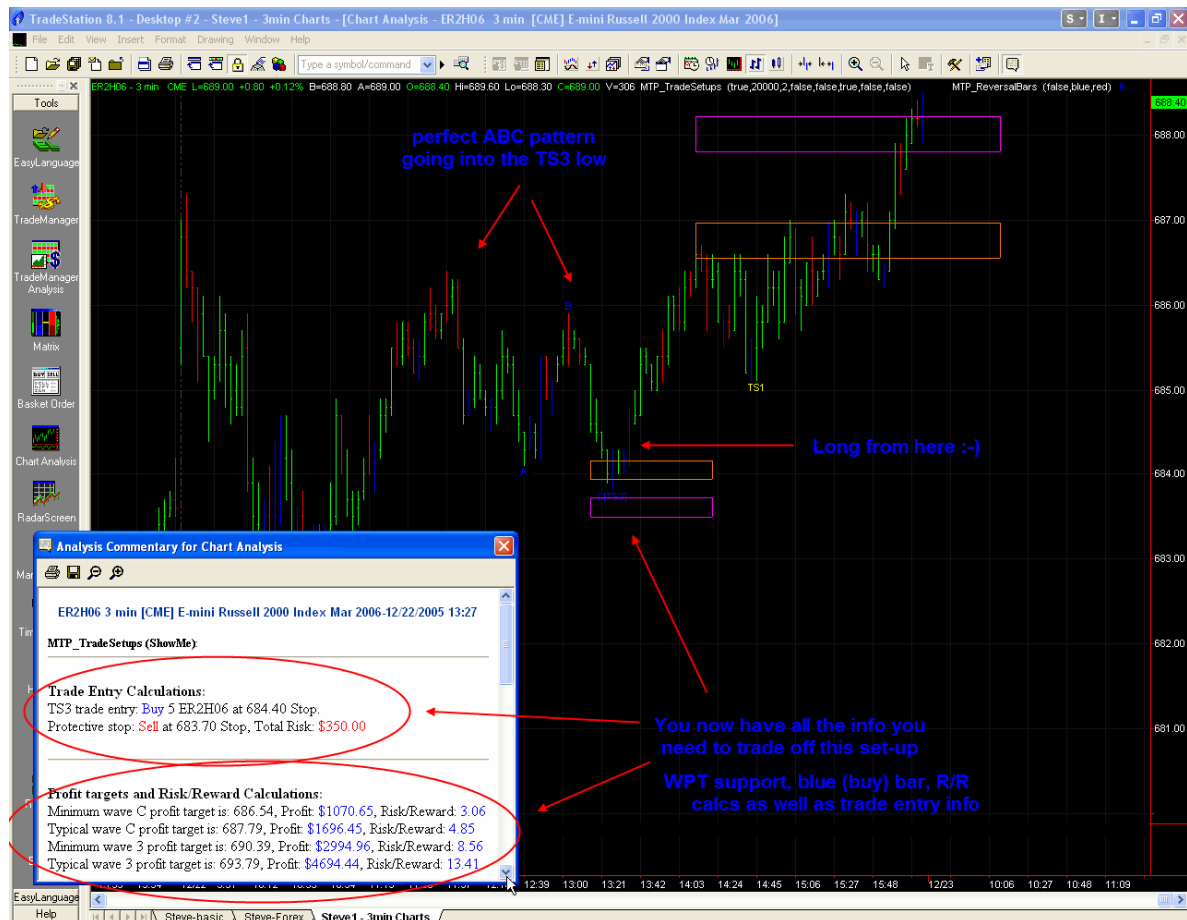
 The 'Capital' and 'PercentRisk' rows are highlighted in red.

To do this please select the MTP_TradeSetups eld and then click on Format. A second box will appear.

Here you have two inputs, "Capital" and "Percentage risk". So please enter your trading capital and how much you wish to risk per trade. We suggest that this is less than 2 or 3% for Daily Charts on Futures and even less (1 or 2 %) for day trading Futures, Then even less for Stocks, 0.5 or 0.1 %.

Now you can click on the required MTP set-up on the Chart, but please make you click on the correct coloured reversal bar, if not it will not perform the risk calculations for you.

Chart:



As you can see, when you click on the appropriately coloured bar a window will be displayed that gives you guidance on the number of lots to trade and the levels to place your orders. It also calculates the total \$ Risk on the trade as well as the projected profit targets. The \$ Profit as well as the Risk/Reward calculations are also displayed for you.

Not only that, the ABC labels and the WPT levels are displayed on the chart for you by coloured boxes, as well as the projected profit targets.

As such all the information you need to fully evaluate a potential trade set-up is presented for on you the TS8 chart for you. There is no longer any need to swap to MTPredictor EOD to evaluate the trade.

I hope you agree that this is a vast improvement and will make the TradeStation eld's very very easy to use now 😊

Again, please email me for download instructions.

From yesterday:

2005 has been a very busy year for us here at MTPredictor and I think that we have achieved a lot. We have a new EOD program – v5.0 and have the new efs files for eSignal and have almost completed the new elds for TradeStation 8. The company has grown significantly during 2006, with us working with many new Partners, for example the CBOT, Genesis, TC2005, CSI, Paritech, eSignal (special thanks to Darell Miller for his help) TradeStation, Townsend Analytics (RealTick), as well as Terra Nova, TacticalTrader, Berkley Futures, IG Markets, Trade2Win, Trading Markets and Traders World - to name a few. We also have a growing network of local representatives in The Netherlands, Germany and South Africa as well as our US offices headed up by Matt Bowen. This process will continue next year as we expand still further. So thanks to all the people and companies here for their help as we look forward to continued growth next year.

I have also spent a lot of time creating help videos for you as well as the regular monthly Seminars. We also introduced the MTPredictor Forum which now has many 100's of members and has a very active following. These will help you to not only learn more about how to use the software but (more importantly) how to trade with it. These combined with this free daily report give what I consider is the best support and training in the industry. We are always available to answer emails and phone questions. So as you can see, MTPredictor is not just a software program, it is a complete trading solution, where you get far far more by the way of help and education.

But for me, the most important thing is the people (you), we have had a very good year on sales and have gained many many new customers. I regularly receive email from new and old customers telling me about recent trades and the profits you have made. This is very nice and I am glad that so many of you are doing so well with the software. For example here is a quote from a post on the Forum "*Here is what i have achieved with MTP , i started my forex trading with MTP three months back with 5000 USD and today my balance stands at 15000 USD.*" This is a 200% return in just 3 months, which is great trading. Here is another one "*Between March and June for example I had increased my daytrading capital by 120%*", which is another massive return in a short space of time.

Feedback like this is great to hear, because making profits is why we are all here, so if you (the customers) are doing so well with the software and making great profits like these then I have done my job in developing the concepts behind the software and brining MTPredictor to the market place. For me, the most important thing is that you (the customer) is making money with the software, if you continue to do that, then I am happy ☺

I have many many more quotes like this from customers who trade Forex, Stocks or from day-traders. It is nice to hear that so many people are doing so well with the software – so well done to all of you

Lastly I would like to thank my main staff members - Tony Beckwith and Matt Bowen who have done an absolutely brilliant job during the year. They have worked very hard giving you the best service in the industry and making this company what it is today - so thanks to them for their hard work. Also I would like to thank our main programmer – Simon, who has also worked very hard getting the new v5.0 program up and running.

So again, thanks you to all of you, customers as well as staff, because without you, MTPredictor would not be here, nor would it be the program it is today.... Thanks.

There will be no report next week, as I am having a week off for Christmas, so today (Friday) will be the last report before 2006. So may I wish you all have a very Merry Christmas and a happy new year and spend time with friends and family over the Christmas break. 2006 is going to be a great year where I hope that we all trade well and make some great profits. Here's to your success next year !

Thanks,

Steve

Real-Time charts provided by eSignal® and TradeStation8®

Paid advertising/sponsorship

To advertise in or sponsor the MTPredictor Reports™, please email tony.beckwith@mtpredictor.com
(Director of Sales & Marketing)

Thanks and good trading

Steve Griffiths
Managing Director and developer of MTPredictor
MTPredictor Ltd.
www.mtpredictor.com

U.S. Government Required Disclaimer - Commodity Futures Trading Commission Futures and Options trading has large potential rewards, but also large potential risk. You must be aware of the risks and be willing to accept them in order to invest in the futures and options markets. Don't trade with money you can't afford to lose. This is neither a solicitation nor an offer to Buy/Sell futures, stocks or options on the same. No representation is being made that any account will or is likely to achieve profits or losses similar to those discussed on this web site. The past performance of any trading system or methodology is not necessarily indicative of future results.

CFTC RULE 4.41 - HYPOTHETICAL OR SIMULATED PERFORMANCE RESULTS HAVE CERTAIN LIMITATIONS. UNLIKE AN ACTUAL PERFORMANCE RECORD, SIMULATED RESULTS DO NOT REPRESENT ACTUAL TRADING. ALSO, SINCE THE TRADES HAVE NOT BEEN EXECUTED, THE RESULTS MAY HAVE UNDER-OR-OVER COMPENSATED FOR THE IMPACT, IF ANY, OF CERTAIN MARKET FACTORS, SUCH AS LACK OF LIQUIDITY. SIMULATED TRADING PROGRAMS IN GENERAL ARE ALSO SUBJECT TO THE FACT THAT THEY ARE DESIGNED WITH THE BENEFIT OF HINDSIGHT. NO REPRESENTATION IS BEING MADE THAT ANY ACCOUNT WILL OR IS LIKELY TO ACHIEVE PROFIT OR LOSSES SIMILAR TO THOSE SHOWN.

NO REPRESENTATION IS BEING MADE THAT ANY ACCOUNT WILL, OR IS LIKELY TO ACHIEVE PROFITS OR LOSSES SIMILAR TO THOSE DISCUSSED WITHIN THIS SITE, SUPPORT AND TEXTS. OUR COURSE(S), PRODUCTS AND SERVICES SHOULD BE USED AS LEARNING AIDS ONLY AND SHOULD NOT BE USED TO INVEST REAL MONEY. IF YOU DECIDE TO INVEST REAL MONEY, ALL TRADING DECISIONS SHOULD BE YOUR OWN.

MTPredictor, Isolation Approach & Techniques Curve are trademarks of MTPredictor Ltd. All other trademarks and brands may be the property of their respective owners. © MTPredictor Ltd. 2005. All rights reserved.

Trade at your own risk. There is risk of loss when trading speculative markets. This training and education newsletter is for information and educational purposes only and should not be considered trading recommendations. You should seek appropriate advice from your broker, or licensed investment advisor, before taking any action. All trading decisions are your own sole responsibility, and MTPredictor or S. E. Griffiths cannot be held responsible for any losses that are incurred as a result. Past performance is no guarantee of future results. © MTPredictor - www.MTPredictor.com 2005.