

## **New In DT5 Users Guide Supplement**

### **New Scan Reports**

There are three completely new and very powerful scan reports including the DT Alert Scanner, ROC and DTosc Scanner and Dual Time Frame Momentum Reversal Scanner. You can now scan weekly data from the DT Trade Setup scanner and the Gartley and Butterfly patterns have been added to the DT EOW Scanner.

All of the scan reports are described in detail in the DT Scan Report Users Guide Supplement that may be downloaded from the DT Owners Page on our web site.

### **Multiple DT Windows**

You may open DT5 several times and have different workspaces open in each window. Makes it really handy to view and manipulate charts from more than one workspace at a time. Dual monitors are really helpful with this feature. Just click on the DT5 icon a second time to open it a second time on your computer.

### **eSignal Users**

May request data by number of days as well as number of bars. This makes it easier to have a specific number of days of intraday data.

### **Colors (From Tools menu)**

Can choose the bar and background color. If the background color is chosen as black, change the price and time axis color to white from the Tools-Font menu.

### **Elder Force Index (new indicator)**

A volume indicator developed by Alexander Elder.

### **Wave Bands – See page 2 below**

Gartley (G) and Butterfly (B) wave bands have been added. A Gartley is about the same as an ABC. However, the Gartley Wave Band has several fairly narrow conditions to target the end of the Gartley. The Butterfly Wave Band is primarily the 127%-162% Ext Retracement.

### **EOW-P – See page 2 below**

The EOW-P now includes projections for a Gartley setup.

### **Overlay – See page 6 below**

More than one chart (symbol) may be included in a window to compare the data form multiple charts.

### **CCI Setting – See page 9 below**

You can now change the color and thickness of the CCI lines

### **Color Options- See page 10 below**

You can now change the background and bar colors.

### **Date-C (Date Counts) – See page 11 below**

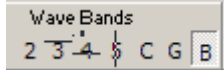
The Date-C routine has been upgraded so you can easily add colors, labels and line thickness to a Date-C file.

## Wave Band Targets

Wave Bands are relatively broad time/price ranges where E-wave and other patterns typically end. If the user identifies a potential pattern, the wave band will identify the target where that pattern may be complete and a reversal follow.

**DT5 has added Gartley and Butterfly patterns to the Wave Band targets.**

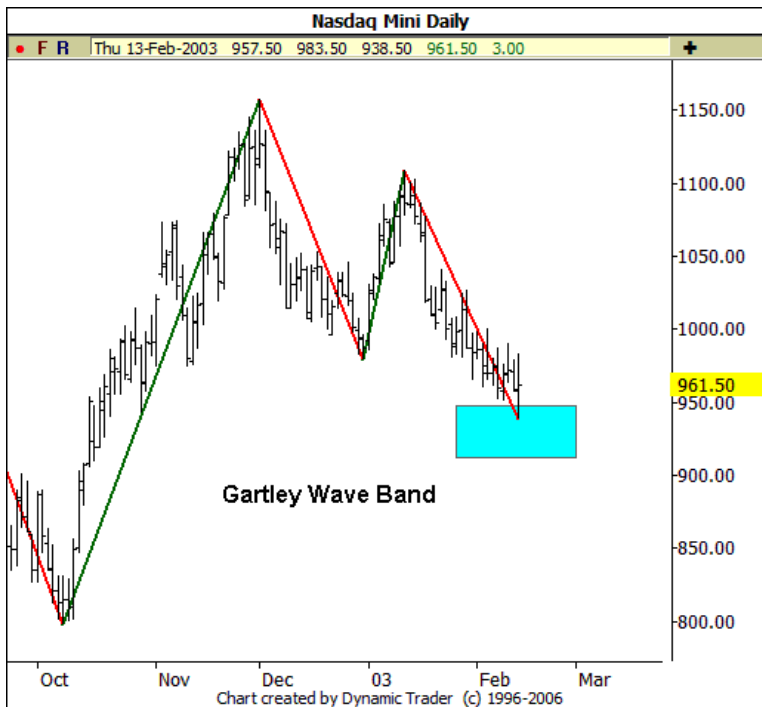
### To Show Wave Band Targets (WBT) On A Chart



You must have a swing file on the chart to make the Wave Band Targets. A Wave Band Target is made from the last confirmed pivot (swing high or low) on a chart. To add Wave Band Targets (WBT) to a chart, click the appropriate wave button on the top toolbar. Click the button again to turn the bands off. Typical Elliott Wave patterns are included plus Gartley (“G”) and Butterfly “B”.

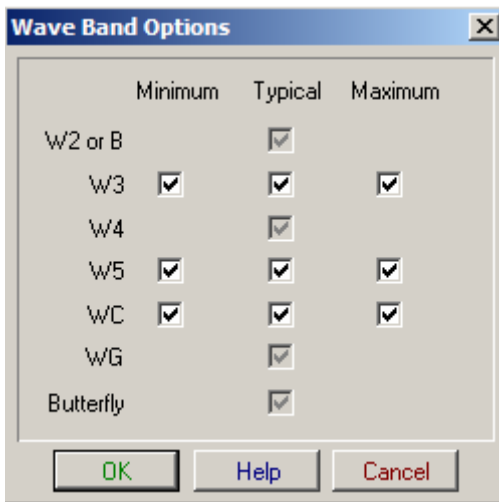
WBTs are colored rectangles representing price and time regions where the last swing of a pattern might terminate followed by a reversal. The wave band targets are projected from the last confirmed pivot on the swing file on the chart. The vertical marker is not used in making wave band targets. The trader decides the probable wave count from the current swing file on screen and clicks the appropriate wave band target button.

Below are Wave Band Target examples.





**Minimum, typical and maximum targets** - Right click one of the wave band buttons to choose which Wave Band Target will be shown for a particular wave. Some of the choices include Min, Typical and Max targets. Others only have a typical choice.

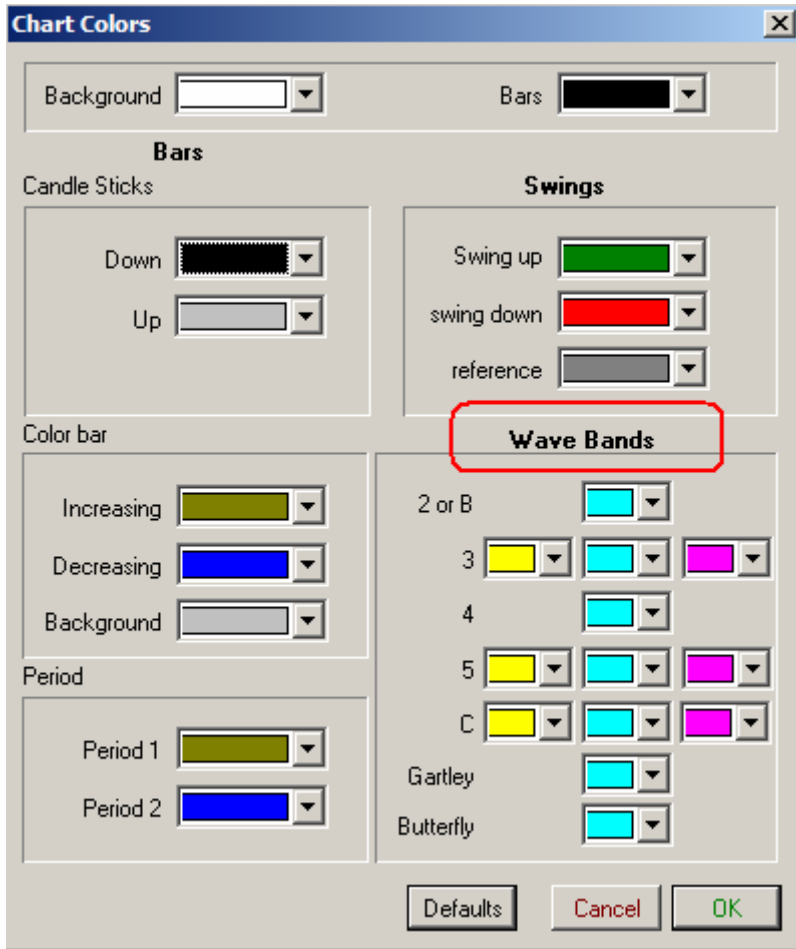


### Setting Alerts

To set an alert on a wave band target, draw a box around it with the **Draw Box** on the left tool bar. The box may be drawn around the whole WBT or a portion of it and an alert may be set by right clicking on the red Red Box you have drawn and choosing 'Make Price-Time Alert.'

### Setting WBT Colors

Choose Tools > Colors from the top menu to change the colors of the Wave Band Targets that appear on the chart.

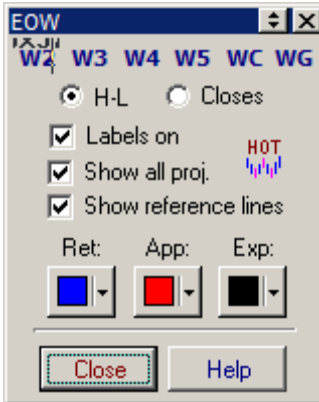


Continued on the next page.

## End of Wave Price Projections

The EOW Price Projections make all of the typical projections at once that are used to help identify the end of a pattern.

**In DT5, the Gartley pattern has been added (W.G).**



**Continued on the next page.**

## Chart Overlay (Multiple Symbols Per Window)

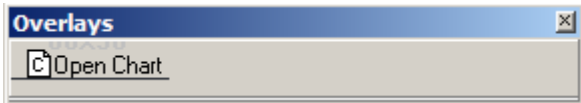
DT now allows the user to put several symbols in the same window to compare trends and reversals of one symbol against one or more other markets. The Chart Overlay feature can only be used with data files that are on your hard drive and in a portfolio. This feature cannot be used with data from real-time data services such as eSignal or Quote.com because that data is on the data company servers and not on your hard drive.

### To Access Chart Overlays

In a window that has a data file, click on the “+” sign next to the last bar statistics just below the top tool bar. The chart example below has a daily SPX chart in the window.



**To Open Another Chart In The Window** click on the **Open Chart** icon and choose any data file from any portfolio.



**Overlay Menu:** The second chart will be shown in the same window. In the example below, the T-Bond chart has been added to the SPX chart window. The Overlay Menu will show which symbols have been added to the original chart. You may choose how to display the overlay chart. In the example, the overlay bond chart is displayed in Candle Stick format. Uncheck the box next to the Overlay Chart name and it will not be displayed in the window. The **Arrow Keys** on the Overlay Menu will move the Overlay chart only, not the original chart. **Remove** the Overlay chart by clicking on the Remove button. You can add move charts to the window by clicking on **Open Chart**.



When the Overlay chart is added, the time scale will be matched to the original chart. The **Arrow Buttons** on the overlay window will move the Overlay chart up, down, forward and back. These arrow buttons will not move the original chart.

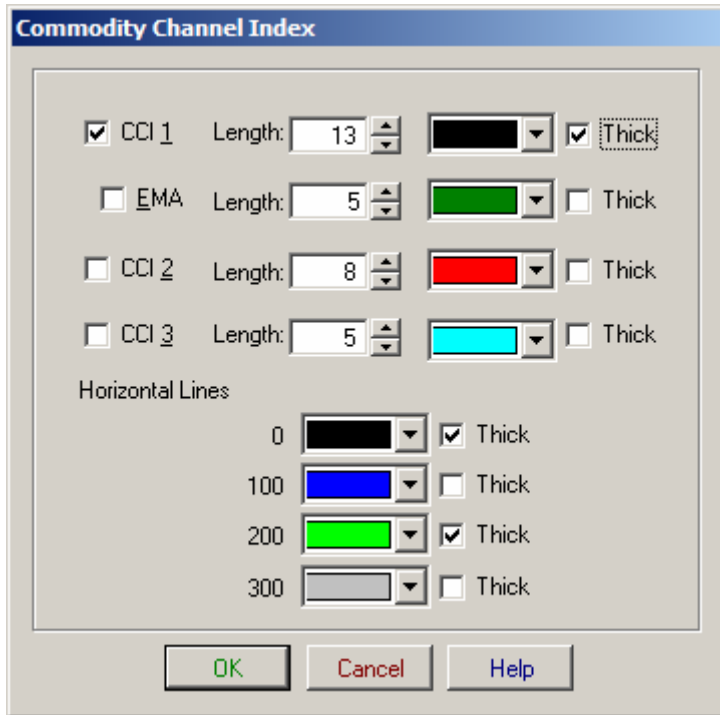
**To close the Overlay menu**, click on the “x” button in the upper right corner of the Overlay Menu. The window may be manipulated normally. However, any chart functions such as retracements, trendlines etc. can only be made for the original chart, not the overlay chart.

**Continued on the next page.**

## CCI Settings

The Commodity Channel Index (CCI) has many uses. Here are two: As an oscillator, it may be used to monitor over bought and over sold conditions. Values above 100 generally indicate over bought and values less than -100 indicate over sold. There are also specific CCI patterns that are used as trade set-ups.

**In DT5, you can now change the color and thickness of CCI lines.**



### EMA Length

Length for the exponential moving average (EMA) of the CCI. The small box must be checked to display the EMA.

### CCI 1, 2 and 3

You may have up to three different look back periods for the CCI in the indicator window. Check the box next to the one you want to display.

Choose the color for each line.

If you want the line to be displayed as “thick”, check the “thick” box.

### Horizontal Lines

You may display up to four horizontal lines.

If “100”, “200” or “300” is chosen, the line will display as + or – the number such as + or – 100.

Choose the color for each line.

If you do not want a horizontal line to be displayed, choose the color white for that line.

Choose if you want a line to be displayed as “thick.”

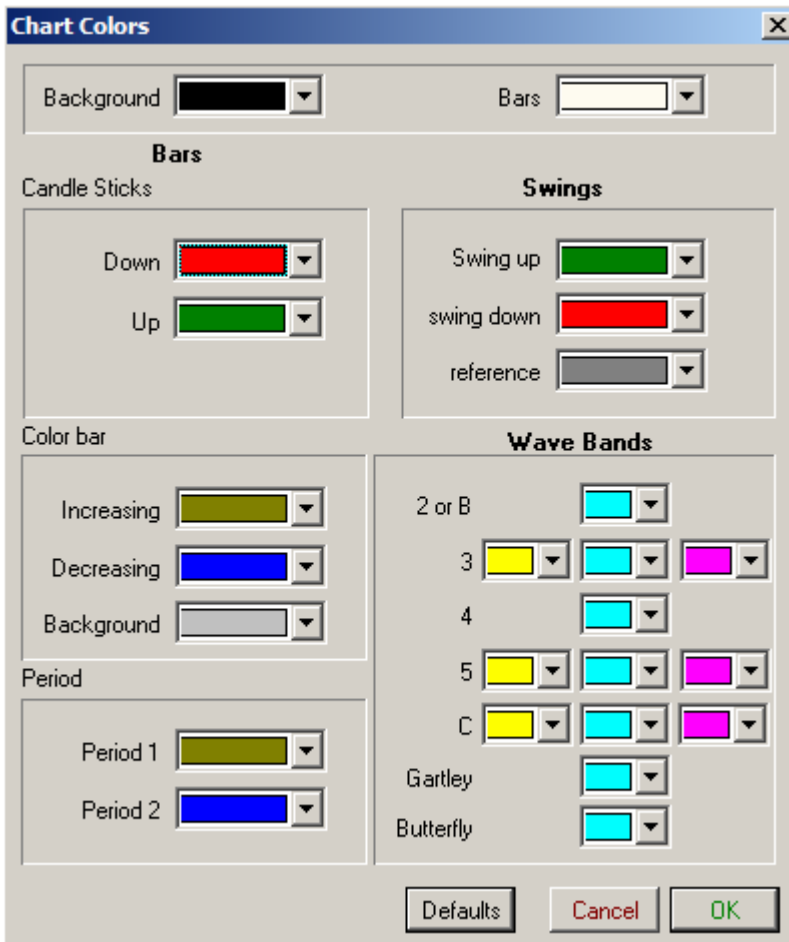
## Color Options

The **Color Options** menu is accessed from the Tools-Color menu on the top tool bar.

Changes made in the Color Options are global - they impact all of your charts. You can change the colors for three of the bar types, primary and reference swings and the wave bands and chart background/Bars.

**In DT5, you can now change the background and bar color.**

**Chart with Black background:** If the chart background is changed to Black and bars to White, you must change the color of the price and time scale Fonts to white by going to Tools-Fonts-Set Price or Time Axis Font.



## **Date Counts (Date-C, Left Tool Bar)**

This flexible routine plots a set of user supplied dates with optional labels on a chart. Examples could be Bradley, Delta, solstice or equinox dates.

**In DT5, you can now place a label for any date, change the color and thickness of any date line.**

Date files are stored in ASCII/text format. You can copy and paste an ASCII or text file into the editor or create a file by entering the dates directly from the editor. If you know how to save the files in ASCII format you can also use a spread sheet such as Excel.

A time alert may be set for any date once the dates are placed on the chart.

This routine only works with **DAILY** data.

### **To add date counts to a chart**

To plot dates on the chart, click the **Date-C** button on the left tool bar.

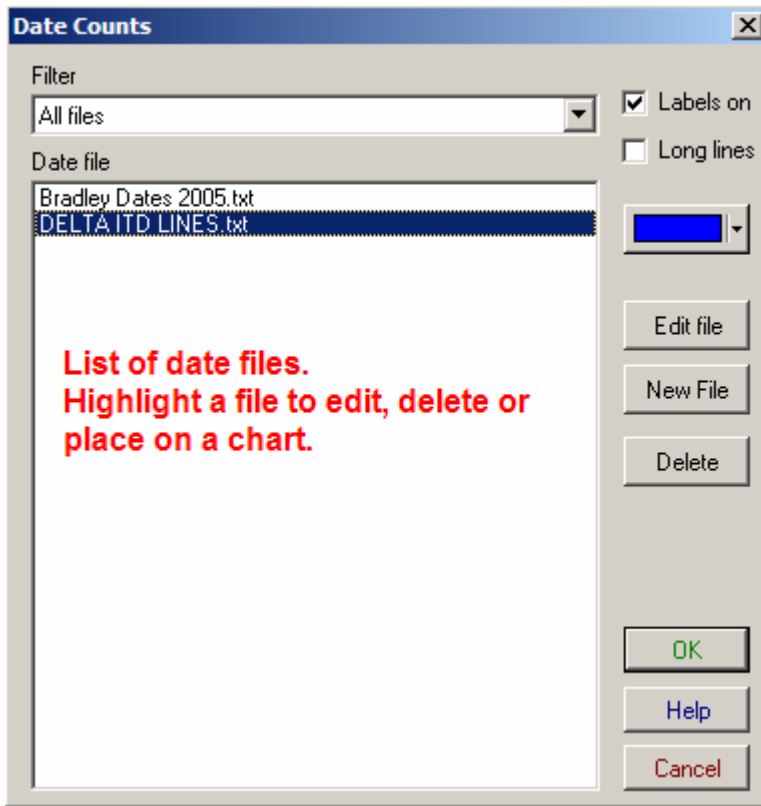
1. Select a date file.
2. Click OK button.

Two left clicks on the chart are required. The first starts the routine and the second determines the vertical placement of the date counts on the chart.

3. First Click. Click anywhere in the bar area. A right click before making the second left click will abort the routine.

4. Second Click. Moving the mouse up and down makes the lines visible. The position of the cursor on the screen when you make this second click is where the horizontal time line will be drawn. The dates and labels appear. The lines will be long or short depending on whether you checked **Long Lines** on the options. If the second click is above (below) the first click, the date lines point down (up).

3. After the lines have been placed on the chart, you may move the time line up or down by making a right click on a time line and choosing 'Move Lines Vertically'.



**Labels on** - check to have the dates and labels appear.

**Long lines** - check to have long vertical lines drawn at each date.

**Edit file** - edit the selected date file (see below).

**New file** - make a new dates file (see below).

**Delete file** - delete the selected date file.

### Location of date count files

Date count files are located in a folder named Dates which is located in the Program Files-DT folder on your computer.

For the typical user this path is: C:\Program Files\DT\Dates. You may place text files you create or receive from other users or that you make outside of the date counts editor in the Dates folder so they will be shown in the Date-C menu. Or you can cut and paste the text file into the Date-C editor.

### Create A New Date File

There are two ways to create a new date file.

Click **New File** to create a new file. If you have a list of dates in a text file, copy the list of dates and choose **Paste** to paste the list of dates into the Date Count Editor, or use the date calendar to choose the new dates.

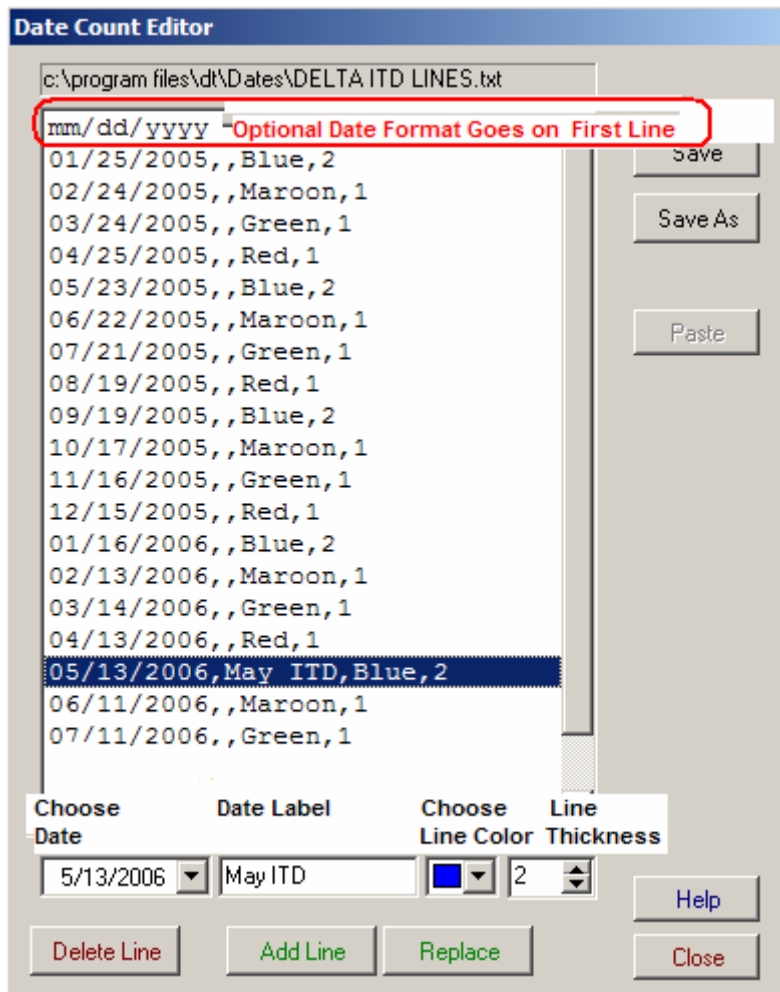
**Date Format:** At the top of the dates tell DT the date format you are using. You must use the same date format throughout the file. If you specify mm/dd/yy as the date format then March 1, 2003 would be entered in the editor as 03/01/03 not 3/1/03. mm = two places for the month. dd = two places for the day. yy = two places for the year. There are two forward slash separators. If you specify mm/dd/yy at the top of the date file, then each and every date in the date file must have eight characters.

For each date, there are three options how they are displayed on the chart.

**Date label:** Enter a label for the date. The label will show under the date on the chart.

**Date Color:** Choose the color for that date line.

**Line Thickness:** Choose the thickness of the date line. The higher the number, the thicker the line.



If you are entering a new date, when you finish entering data in a row, press the **Add Line** button to go to the next row.

If dates have been pasted in, you may highlight the date, add a label, color and thickness and choose the **Replace** button to save the changes to the date.

Add a date to the file by choosing a date, label, color and thickness and choose the **Add Line** button.

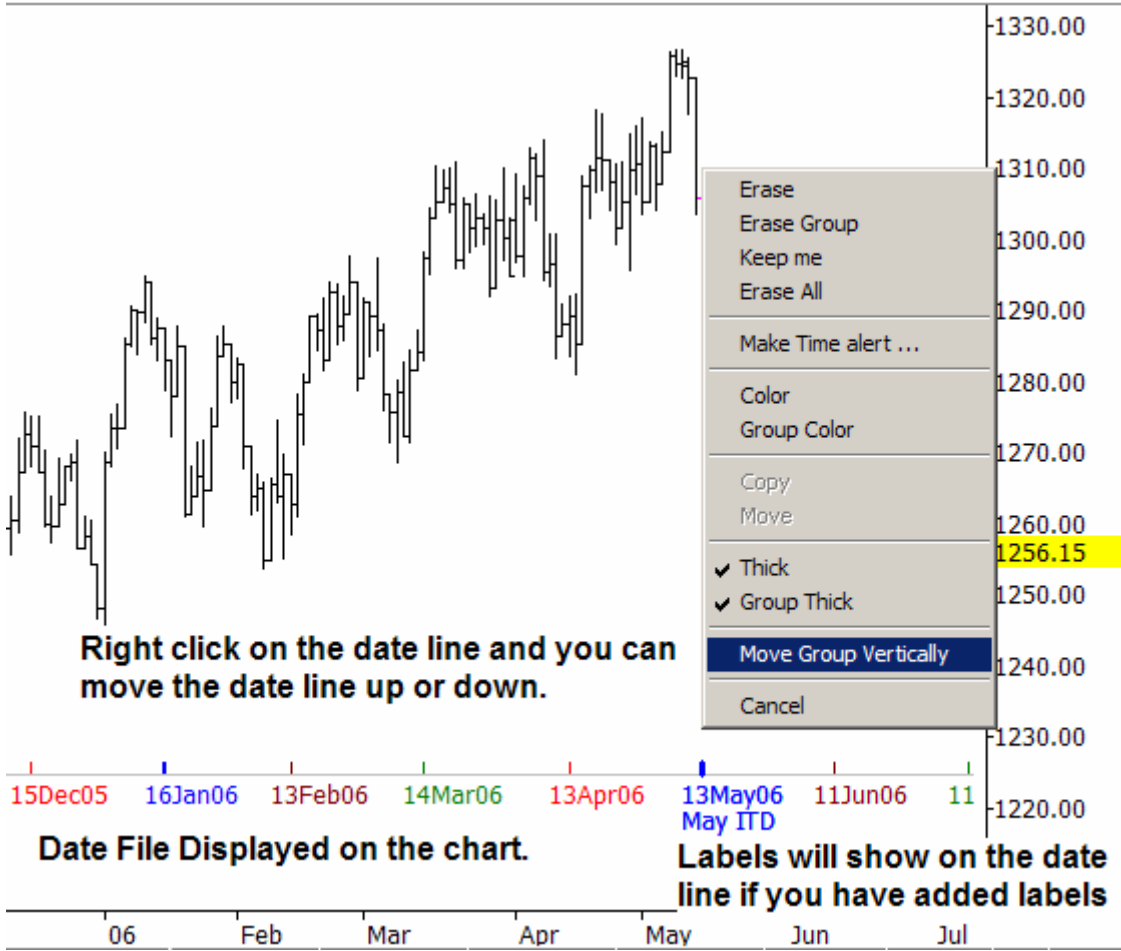
If you have made any changes, choose **Save** to save the changes. If it is a new file without a name, choose the **Save As** button to save the new file.

If you have a date file from an outside source it may have mixed date formats such as 03/01/03 and 7/1/03. You have two choices to make the file compatible with DT.

1. No date specified - Don't enter a date format at the top of the date file. DT will use your computer short date regional settings for the date format. This will often handle mixed dates in a date file.
2. Specify a date format - If leaving out the date format from the top of the file does not work then you will need to edit the dates to make them consistent with the date format you add to the top of the file.

DT recognizes the following date count formats:

<b>Format</b>	<b>Examples</b>
mm/dd/yy	11/19/02
dd/mm/yy	29/05/02
yy/mm/dm	02/12/31
mm/dd/yyyy	12/31/2002
dd/mm/yyyy	31/12/2002
yyyy/mm/dd	2002/12/31
mmddy	123102
ddmmy	311202
yymmdd	021231
mmddyyyy	12312002
ddmmyyyy	31122002
yyyymmdd	20021231



**See also:**

**Time alerts**

**End of document.**